



# Como Park Revitalization Plan

JUPITER INLET COLONY

# Vision

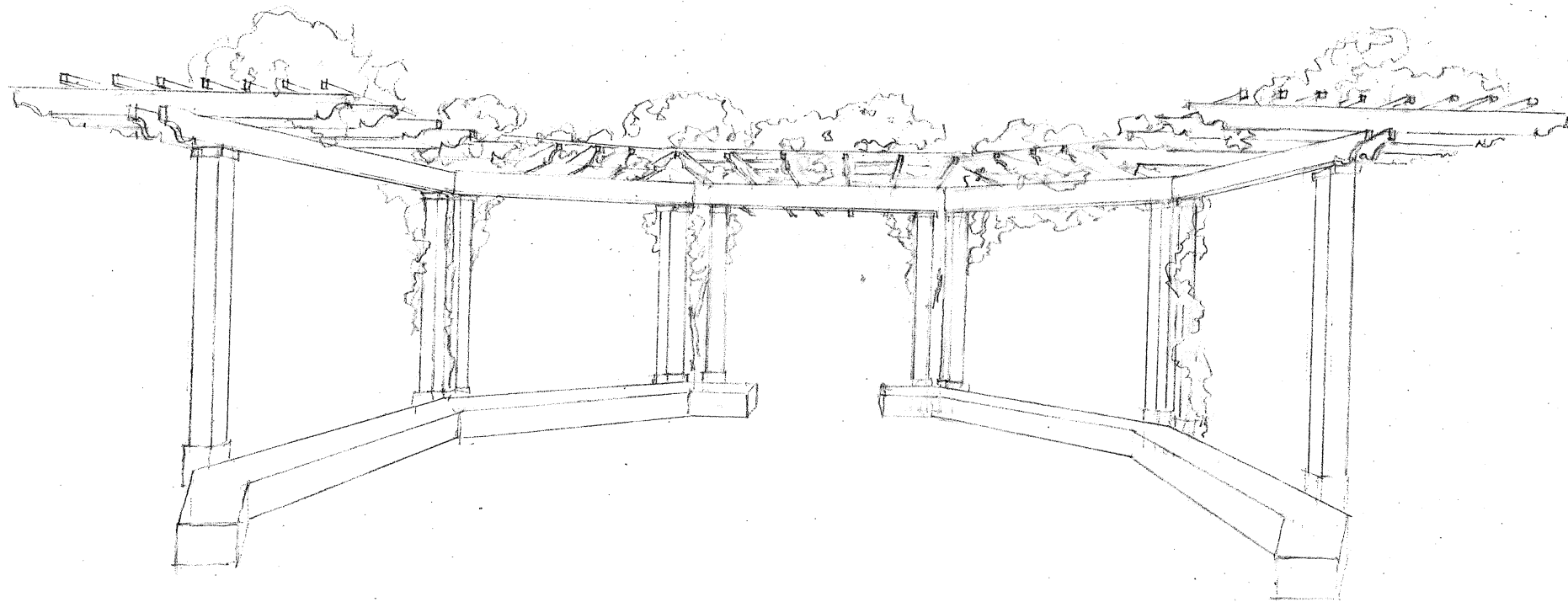
- ▶ To reflect in the Park the standard of excellence which is expressed by the residences of the Jupiter Inlet Colony

# Mission

- ▶ To create a Park which is a natural refuge for the residents of the Jupiter Inlet Colony and their guests and is a face of the community.

# Comprehensive Concept

- ▶ Sustainable
- ▶ Low Maintenance
- ▶ Tropical
- ▶ Florida Natives
- ▶ Right Plant in the Right Place



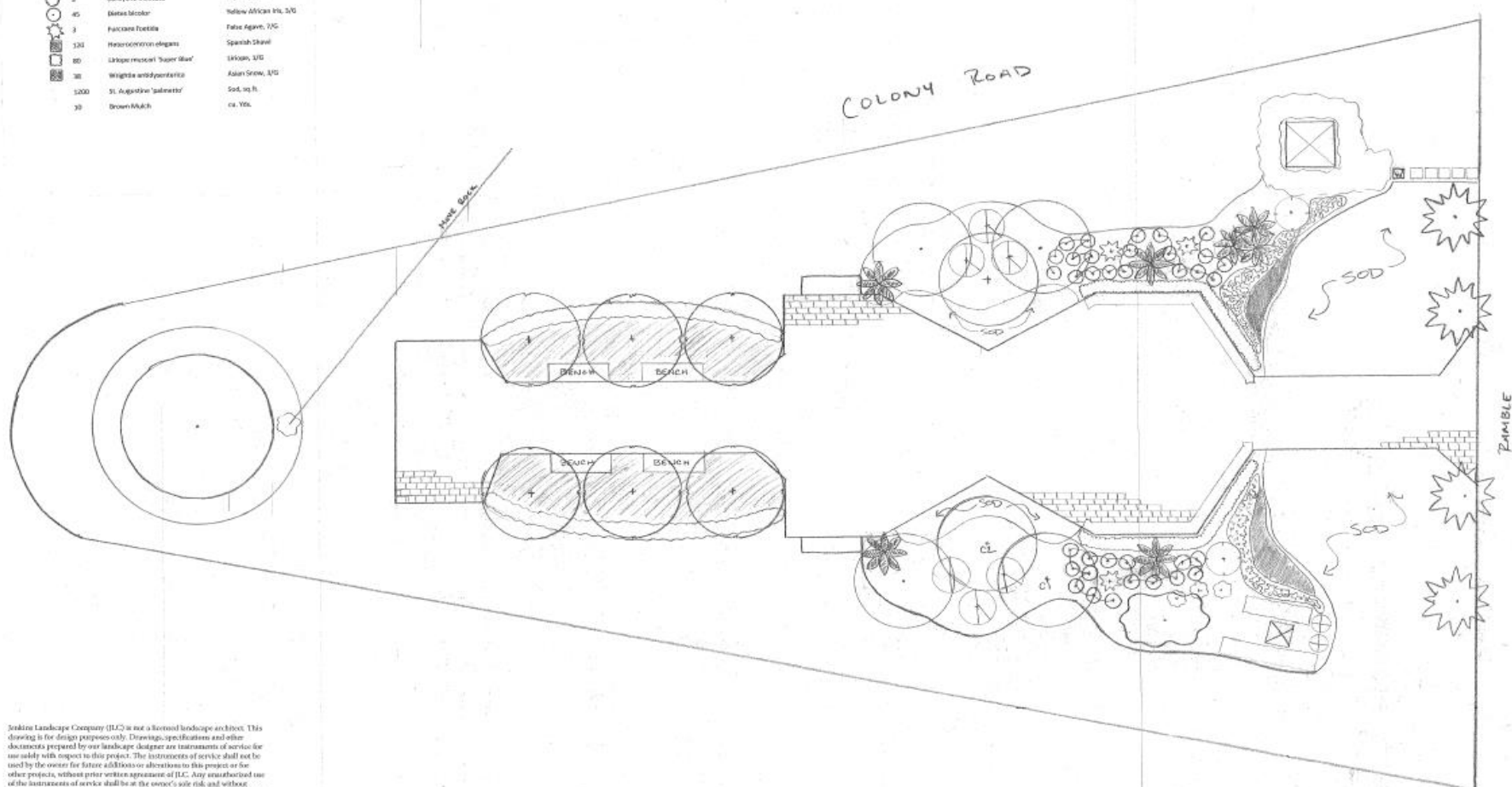
Qty	Notes/Plants	
6	Elagiplexis amara	Seashore palm, 7/5
3	Coccox nashii 'Green Majesty'	Coconut palm, 17' 0" light curve
3	Quercus laevis	Ligustrum vulgare, 15/10, 3" GA
6	Pithecellobium aduncum	Lantana tree, 300/15, 14'-15' GA speckled
4	Thrinax radiata	Florida thatch palm, single 4' GA
1	Thrinax radiata	Florida thatch palm, single 4' GA

Qty	Notes/Plants	
60	Stenandrium	7/5, 4"
24	Cordia alliodora 'Var. latifolia'	Cordia, 1/5, 1/5, 3/5
2	Conocarpus erectus var. salicifolius	Silver buttonwood, 7/5
3	Gordyana fruticosa	TI plant, 7/5
45	Banksia laevis	Yellow African 1/5, 3/5
3	Palmetto	Palmetto, 7/5
120	Hebe	Spanish Shrub
80	Ligustrum	1/5, 3/5
30	Wrightia	1/5, 3/5
1200	St. Augustine	St. Augustine, 1/5
30	Brown Mulch	1/5, 3/5

Qty	Notes/Plants	
60	Stenandrium	7/5, 4"
24	Cordia alliodora 'Var. latifolia'	Cordia, 1/5, 1/5, 3/5
2	Conocarpus erectus var. salicifolius	Silver buttonwood, 7/5
3	Gordyana fruticosa	TI plant, 7/5
45	Banksia laevis	Yellow African 1/5, 3/5
3	Palmetto	Palmetto, 7/5
120	Hebe	Spanish Shrub
80	Ligustrum	1/5, 3/5
30	Wrightia	1/5, 3/5
1200	St. Augustine	St. Augustine, 1/5
30	Brown Mulch	1/5, 3/5

Qty	Notes/Plants	
60	Stenandrium	7/5, 4"
24	Cordia alliodora 'Var. latifolia'	Cordia, 1/5, 1/5, 3/5
2	Conocarpus erectus var. salicifolius	Silver buttonwood, 7/5
3	Gordyana fruticosa	TI plant, 7/5
45	Banksia laevis	Yellow African 1/5, 3/5
3	Palmetto	Palmetto, 7/5
120	Hebe	Spanish Shrub
80	Ligustrum	1/5, 3/5
30	Wrightia	1/5, 3/5
1200	St. Augustine	St. Augustine, 1/5
30	Brown Mulch	1/5, 3/5



JUPITER INLET COLONY

DESIGN: E.A. Tolles  
SCALE: 1/4" = 1'-0"  
DATE: APR 11, 2021  
REV:

DESIGN AND INSTALLATION

12800 SOUTHEAST DIVE HIGHWAY • MOORE SOUND, FLORIDA 33455

546-2881

JENKINS LANDSCAPE COMPANY INC.

Jenkins Landscape Company (JLC) is not a licensed landscape architect. This drawing is for design purposes only. Drawings, specifications and other documents prepared by our landscape designer are instruments of service for use solely with respect to this project. The instruments of service shall not be used by the owner for future additions or alterations to this project or for other projects, without prior written agreement of JLC. Any unauthorized use of the instruments of service shall be at the owner's sole risk and without liability to the landscape designer and JLC. The owner agrees to hold harmless, indemnify, and defend the design professional against all damages, claims and losses of any kind arising out of or from the plan and specification on other projects, for additions to the owner's project, or for completion of this project.





Seashore Palm



Lignum Vitae



Lorito Tree



Thrinax radiata



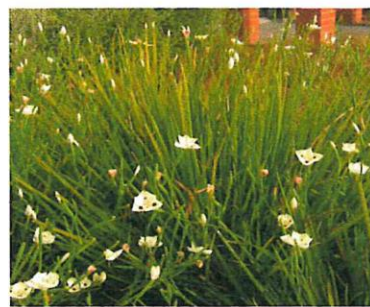
Croton "Mrs. Iceton"



Silver Buttonwood



Ti Plant



African Iris



False Agave



Spanish Shawl



Urlope



Asian Snow





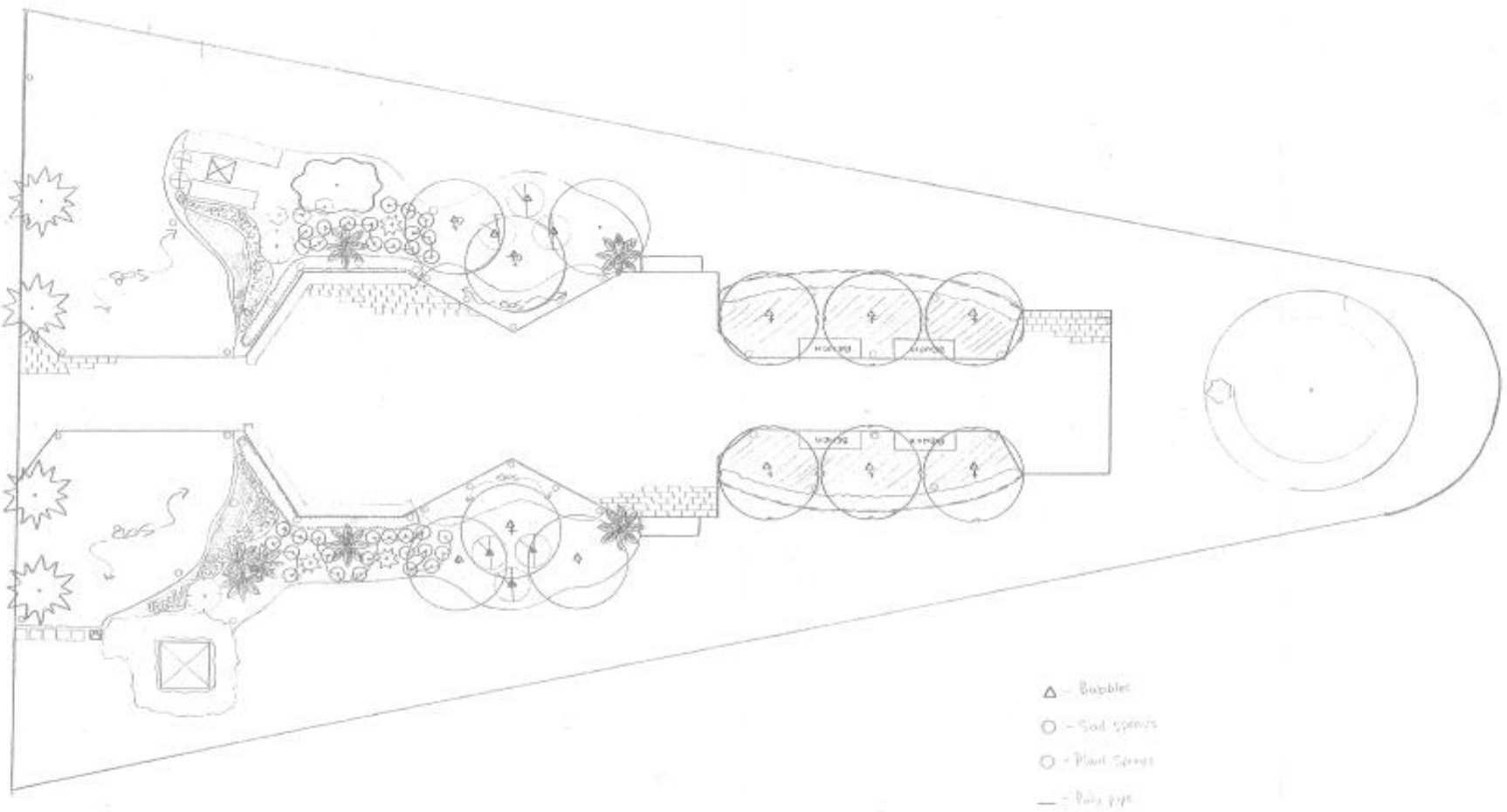




Pithecellobium Arboreum (Lorito Tree)



Florida Thatch Palm



DRAWN BY: J. J. J.  
 SCALE: 1/4" = 1'-0"  
 DATE: 1/15/81  
 REV:

# JUPITER INLET COLOV

DESIGN AND INSTALLATION

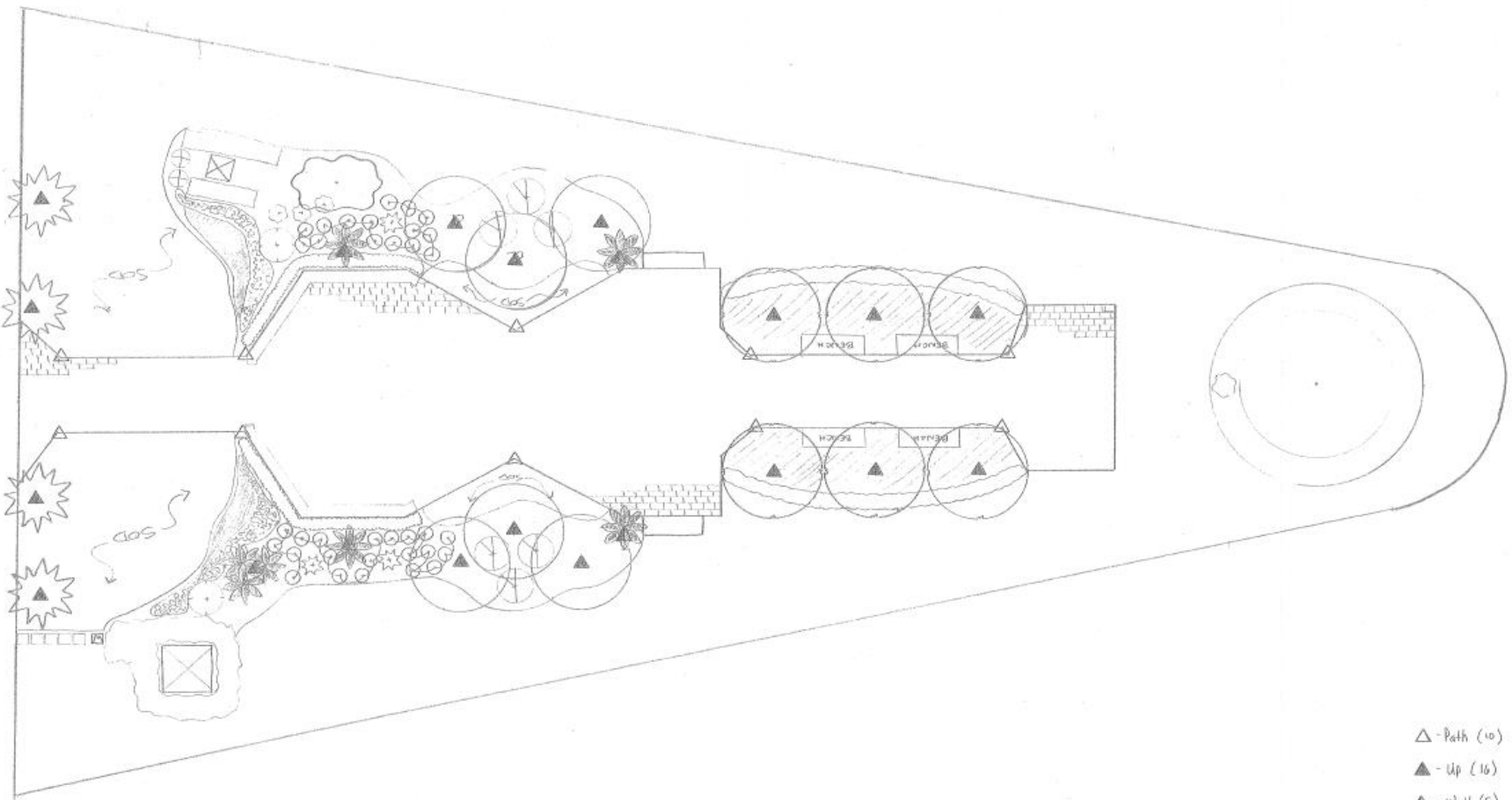
1980 SOUTHEAST OCEAN HIGHWAY

1000 SOUTH, FLORIDA 33405

54-1311

Jenkins  
 LANDSCAPE  
 COMPANY  
 INC.





- △ - Path (10)
- ▲ - Up (16)
- ▲ - Well (5)

# JUPITER INLET COLONY

DRAWN BY: J. J. JORDAN  
 SCALE: 1/4" = 1'-0"  
 DATE: APRIL, 1971  
 REV: 1

DESIGN AND INSTALLATION

12220 BOUTHEAST DRIVE, HIGHWAY

10000 ROAD, FLORIDA 33455

544-2381

**Jenkins**  
 LANDSCAPE  
 COMPANY  
 INC.



# Funding Plan

- ▶ Estimated Budget \$60,000
- ▶ Residents of Jupiter Inlet Colony
- ▶ Patrons of Garden Club
  - ▶ Letter
  - ▶ Personal Visit
  - ▶ Committee
- ▶ Town
- ▶ Garden Club